

ASCO SERIES 300 Service Entrance Power Transfer Switch

The ASCO Service Entrance Power Transfer Switch combines automatic power switching with the necessary disconnecting, grounding, and bonding required for use as service entrance equipment. The power transfer switch meets all National Electrical Code requirements for service entrance use.

Product Features:

- Suitable for use as service entrance equipment. Listed to UL 891 (standard for switchboards) for 600 - 3000 amps, sizes and UL 1008 (standard for panel-boards) for 70 - 400 amps.
- Automatic Transfer Switch is listed to UL 1008 for total system loads
- Sizes available from 70 - 3000 amps, 600 VAC, 50 or 60 Hz, single or three phase
- Silver plated copper ground and neutral bus with solderless screw type terminals
- Ground fault trip protection provided on sizes 1000 amps and above
- Available with solid or switched neutral

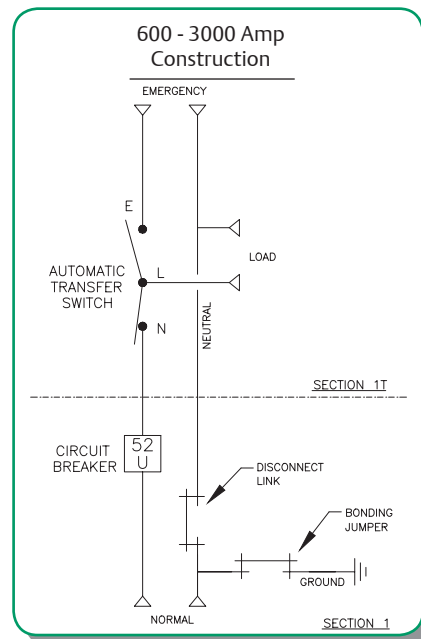
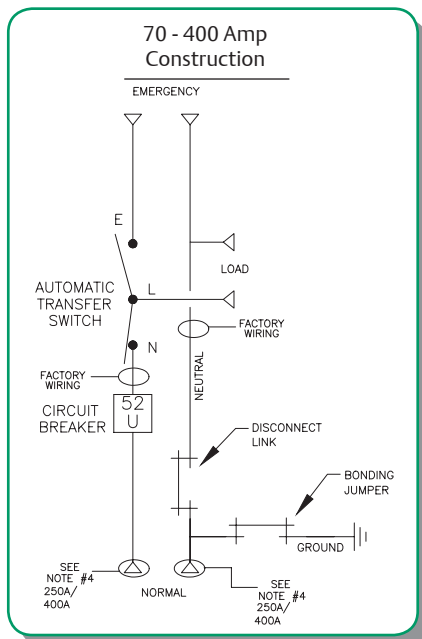


ASCO SERIES 300
SE Rated 800 amperes Type 1 enclosure



ASCO SERIES 300
SE Rated 200 amperes in Type 3R enclosure

ASCO SERIES 300SE products use two types of construction.



Products 400 amperes or less, utilize a single enclosure including a service (utility source) disconnect circuit breaker, as well as the power transfer switch, grounding and bonding provisions.

Products 600 amperes and above, utilize a multi-section switchboard construction including a service equipment section containing the service (utility source) disconnect circuit breaker, grounding, and bonding provisions. A second section contains the power transfer switch.

To order an ASCO SERIES 300SE Power Transfer Switch, complete the following catalog number:

J		+ 03AUS		+ B		+ 3		+ 0600		+ N		+ GX		+ C	
Frame	Product Type	Neutral Code	Phase Poles	Amperes Continuous Rating	Voltage Code	Controller Code	Enclosure								
D 70 - 225 Amp	03AUS Automatic	A Solid Neutral	2 2 poles, 1Ø	0070, 0100, 0150, 0200, 0225 ⁵ , 0250 ⁵ , 0400, 0600, 0800, 1000, 1200, 1600, 2000, 2500, 3000	A ² 115 B ² 120 C 208 D 220 E 230 F 240 H 380 J 400 K 415 L 440 M 460 N 480 Q 575 R 600	G No Accessories GX With Accessories	C Type 1 (Standard) M Type 3R Secure Double Door N Type 4 ³ Secure Double Door P Type 4X ^{3,6} Secure Double Door 316 SS Q Type 12 ³ Secure Double Door R Type 3RX ^{3,6,7} Secure Double Door S Type 4X ³ Secure Double Door 304 SS								
E 260 - 400 Amp	03NUS Non Automatic	B ¹ Switched Neutral	3 3 poles, 3Ø												
J 150 - 600 ⁸ Amp	3ADUS Automatic Delayed Transition														
H 800 - 1200 Amp	3NDUS Non Automatic Delayed Transition														

- Notes:**
1. Specify neutral code "C" for 250 and 400 amperes for 3AUS, 3NUS only.
 2. 115-120 volt available 150-400 amperes for 3AUS, 3NUS only.
 3. Available for 70-1000 amperes, use type 3R for 1200-3000 ampere applications.
 4. A solid neutral is provided as standard.
 5. 200, 225 ampere rated switches suitable for use with copper cable only.

- Refer to paragraph 310.15 of the NEC for additional information.
6. Type 316 stainless steel is the standard. It provides an improved reduction in corrosion of salt and some chemicals. It is the preferred choice for marine environments.
 7. Available only on switches rated 1200, 2000, 2600 and 3000 amperes.
 8. J 150-400 ampere for Series 3ADUS/3NDUS only.

ASCO SERIES 300SE Power Transfer Switch Dimensions and Shipping Weights

UL Type 1 Enclosure⁴

Switch Rating Amps	Phase Poles	Neutral Code	Dimensions, In. (mm)			Approx. Shipping Weight Lb. (kg)
			Width	Height	Depth	
70, 100, 150, 200, 225	2	A	36 (914)	48 (1219)	13 (330)	400 (185)
	2	B	36 (914)	48 (1219)	13 (330)	408 (188)
	3	A	36 (914)	48 (1219)	13 (330)	408 (188)
	3	B	36 (914)	48 (1219)	13 (330)	420 (193)
250, 400	2	A	36 (914)	48 (1219)	13 (330)	400 (185)
	2	C	36 (914)	48 (1219)	13 (330)	408 (188)
	3	A	36 (914)	48 (1219)	13 (330)	408 (188)
	3	C	36 (914)	48 (1219)	13 (330)	420 (193)
150, 200, 225, 260, 400 Series 3ADUS/3NDUS Only	2	A	38 (965)	91 (2311)	28 (711)	860 (396)
	2	B	38 (965)	91 (2311)	28 (711)	870 (401)
	3	A	38 (965)	91 (2311)	28 (711)	870 (401)
	3	B	38 (965)	91 (2311)	28 (711)	880 (405)
600 ¹	2	A	38 (965)	91 (2311)	28 (711)	860 (396)
	2	B	38 (965)	91 (2311)	28 (711)	870 (401)
	3	A	38 (965)	91 (2311)	28 (711)	870 (401)
	3	B	38 (965)	91 (2311)	28 (711)	880 (405)
800 ¹	2	A	38 (965)	91 (2311)	28 (711)	1460 (673)
	2	B	38 (965)	91 (2311)	28 (711)	1470 (677)
	3	A	38 (965)	91 (2311)	28 (711)	1470 (677)
	3	B	38 (965)	91 (2311)	28 (711)	1480 (682)
1000 ¹ , 1200 ¹	2	A	38 (965)	91 (2311)	48 (1218)	1460 (673)
	2	B	38 (965)	91 (2311)	48 (1218)	1470 (677)
	3	A	38 (965)	91 (2311)	48 (1218)	1470 (677)
	3	B	38 (965)	91 (2311)	48 (1218)	1480 (682)
1600 ¹ , 2000 ¹	3	A	38 (965)	91 (2311)	48 (1218)	1684 (781)
	3	B	38 (965)	91 (2311)	48 (1218)	1716 (796)
	3	A	38 (965)	91 (2311)	72 (1829)	2172 (1008)
	3	B	38 (965)	91 (2311)	72 (1829)	2203 (1022)

- Notes:**
1. Unit is designed for top and bottom cable entry for all services and load.
 2. Enclosures for 600 - 3000 amps are freestanding.
 3. A space heater accessory 44G is required with all service entrance (Type 3R) switches to help reduce

UL Type 3R Enclosure⁴

Switch Rating Amps	Phase Poles	Neutral Code	Dimensions, In. (mm)			Approx. Shipping Weight Lb. (kg)
			Width	Height	Depth	
70, 100, 150, 200, 225	2	A	36 (914)	48 (1219)	16 (406)	500 (232)
	2	B	36 (914)	48 (1219)	16 (406)	520 (241)
	3	A	36 (914)	48 (1219)	16 (406)	520 (241)
	3	B	36 (914)	48 (1219)	16 (406)	530 (246)
250, 400	2	A	36 (914)	48 (1219)	16 (406)	500 (232)
	2	C	36 (914)	48 (1219)	16 (406)	520 (241)
	3	A	36 (914)	48 (1219)	16 (406)	520 (241)
	3	C	36 (914)	48 (1219)	16 (406)	530 (246)
150, 200, 225, 260, 400 Series 3ADUS/3NDUS Only	2	A	38 (965)	91 (2311)	28 (711)	1170 (543)
	2	B	38 (965)	91 (2311)	28 (711)	1180 (548)
	3	A	38 (965)	91 (2311)	28 (711)	1180 (548)
	3	B	38 (965)	91 (2311)	28 (711)	1200 (557)
600 ¹	2	A	38 (965)	91 (2311)	28 (711)	1170 (543)
	2	B	38 (965)	91 (2311)	28 (711)	1180 (548)
	3	A	38 (965)	91 (2311)	28 (711)	1180 (548)
	3	B	38 (965)	91 (2311)	28 (711)	1200 (557)
800 ¹	2	A	41 (1041)	96 (2438)	33 (838)	1530 (710)
	2	B	41 (1041)	96 (2438)	33 (838)	1540 (715)
	3	A	41 (1041)	96 (2438)	33 (838)	1540 (715)
	3	B	41 (1041)	96 (2438)	33 (838)	1560 (724)
1000 ¹ , 1200 ¹	2	A	41 (1041)	96 (2438)	62 (1575)	1530 (710)
	2	B	41 (1041)	96 (2438)	62 (1575)	1540 (715)
	3	A	41 (1041)	96 (2438)	62 (1575)	1540 (715)
	3	B	41 (1041)	96 (2438)	62 (1575)	1560 (724)
1600 ¹ , 2000 ¹	3	A	41 (1041)	96 (2438)	62 (1575)	2180 (1012)
	3	B	41 (1041)	96 (2438)	62 (1575)	2200 (1021)
	3	A	41 (1041)	96 (2438)	86 (2184)	2815 (1306)
	3	B	41 (1041)	96 (2438)	86 (2184)	2865 (1329)

- condensation and protect the circuit breaker. It is recommended when environmental enclosures (Type 4, 12) are ordered for installation outdoors. See Optional Accessories page for space heater options (acc. 44G).
4. Dimensional data is approximate and subject to change. Certified dimensions available upon request.

SERIES 300SE External Power Connections

Sizes UL-Listed Solderless Screw-Type Terminals

Switch Rating	Ranges of AL-CU Wire Sizes (Unless Specified Copper Only)
70, 100, 150, 200 ¹ , 225 ¹	One #14 to 4/0 AWG
250, 400	Two 1/0 AWG to 250 MCM or One #4 AWG to 600 MCM
600	Two 1/0 AWG to 600 MCM
800, 1000, 1200	Four 1/0 to 600 MCM
1600, 2000	Six 1/0 to 600 MCM
2500	Twelve 3/0 to 600 MCM
3000	Twelve 3/0 to 600 MCM

- Notes:**
1. All SERIES 300SE switches are furnished with a solid neutral plate (unless switched neutral configuration is specified) and terminal lugs.
 2. 200 and 225 ampere rated switches for use with copper cable only. Refer to paragraph 310.15 of the NEC for all additional information.
 3. Use wire rated 75 degrees minimum for all power connections.
 4. Refer to the outline drawing for maximum power cable connections for circuit breaker.

Extended Warranties for SERIES 300SE Transfer Switches

(3AUS/3NUS/3ADUS/3NDUS)

Description
1 Year Extension (Total of 3 Years)
2 Year Extension (Total of 4 Years)
3 Year Extension (Total of 5 Years)

- Notes:**
1. Standard warranty is (24) months, 2 years from date of shipment, extended warranty is in addition to the two years, for a total of 3, 4 or 5 years, except where the warranty period for the circuit breaker shall be limited to 24 months from date of shipment from ASCO.
 2. Refer to Publication 3223 for warranty terms and conditions.

SERIES 300SE System Short Circuit Rating 3AUS/3ADUS¹

Switch Rating Amps	@480V
70 - 225	22,000
250, 400	35,000
600	50,000
800	65,000
1000, 1200	50,000
1600, 2000	65,000
2500, 3000	100,000

- Notes:**
1. Refer to SERIES 300 Publication 1195 for switch ratings.

Emerson Network Power

ASCO Power Technologies

50 Hanover Road, Florham Park, NJ 07932

EmersonNetworkPower.com/ASCO

customercare@asco.com 1-800-800-ASCO (2726)

Emerson, Emerson Network Power are trademarks of Emerson Electric Co. or one of its affiliated companies.

©May, 2015 Emerson Electric Co.

Publication 2007_R1